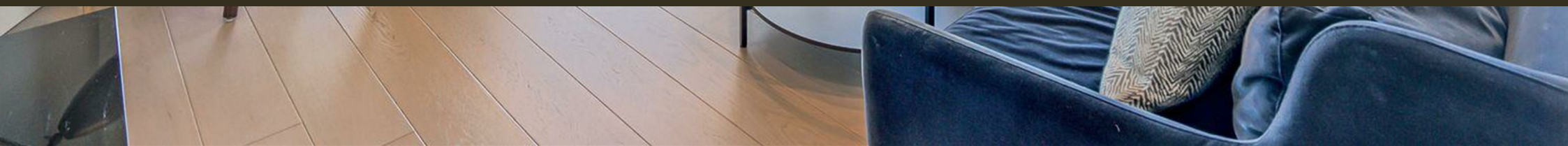




24 Albert Embankment, London  
SE1

GARTONJONES.COM



24 Albert Embankment, London  
, SE1

GARTON JONES.COM

9 Albert  
Embankment  
London  
SE1 7SP

Lettings:  
+44 (0) 20 7735 1888  
nineelms@gartonjones.com  
www.gartonjones.com

£675 Per Week

An immaculately presented 1-bedroom apartment of approx. 584 sq.ft (54.2sq.m) available for rent in The Corniche, a popular residential development by Berkeley Homes and located on Albert Embankment, moments from the River Thames. This property comprises an open plan reception with a fully fitted interior designed kitchen with integrated appliances, floor-to-ceiling windows, a spacious balcony, luxury bathroom suite, and a utility cupboard with good storage.

Designed by the internationally acclaimed architectural practise, Foster and Partners, residents will also have exclusive access to first-class on-site amenities including a 19th-floor Skyline Club Lounge, an extensive health and wellness suite offering spa treatments, a gymnasium with private training facilities and an indoor infinity pool plus a cinema screening room, bowling alley and games room. Vauxhall Station is a short walk away with access to the Victoria Line, overground rail links and bus station enabling easy access across London.

Please note furniture may differ to that shown in the current photos.

- 1 Bedroom
- 584 sq.ft (54.2sq.m)
- 24 Hour Concierge
- Open Plan Reception Room
- Comfort Cooling
- Balcony
- Swimming Pool & Spa Facilities
- Residents Gym
- 19th Floor Residents Lounge, Bar & Terrace
- Cinema Screening Room & Bowling Alley

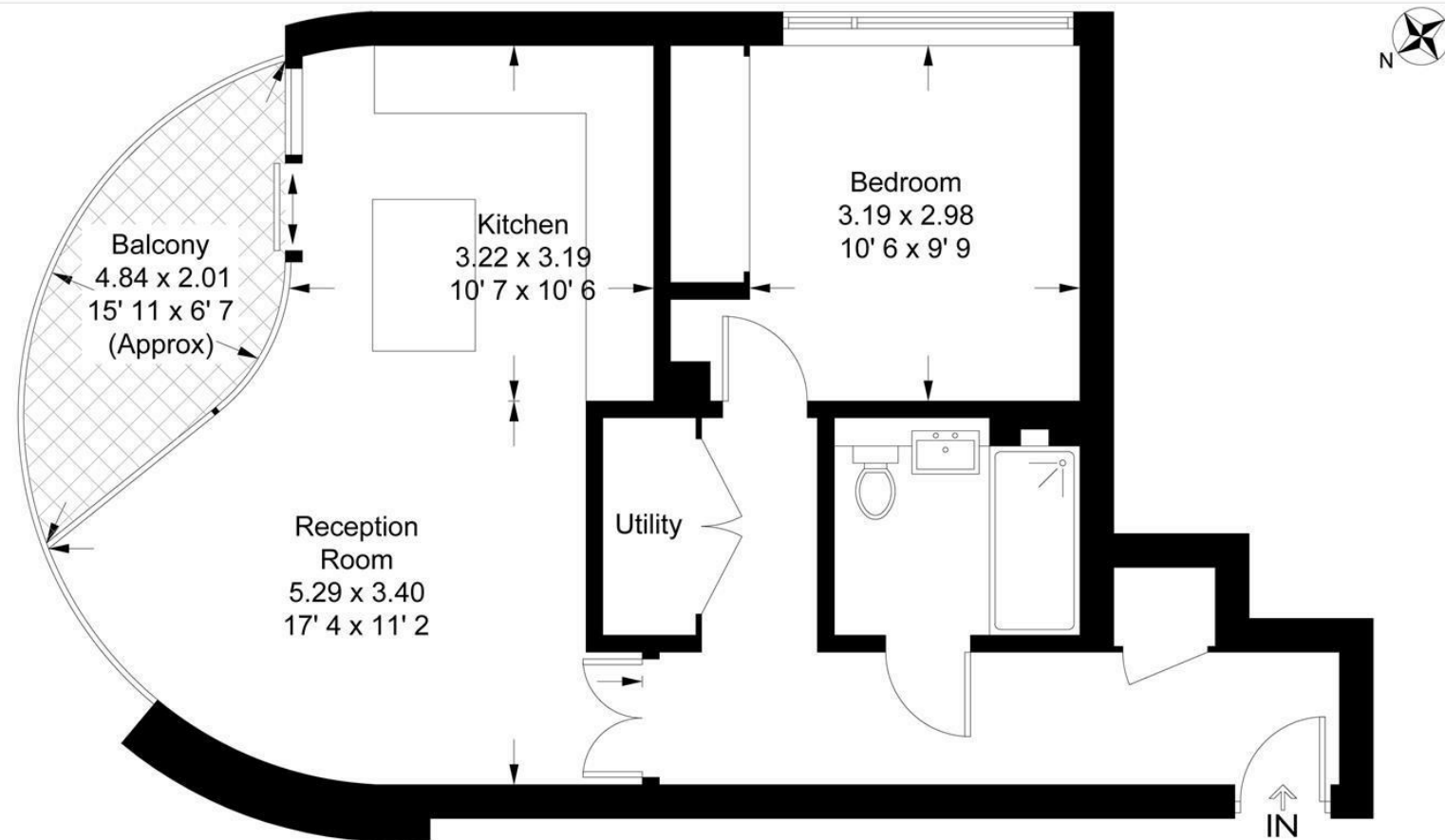


**Tower One, The Corniche**

Approximate Gross Internal Area = 584 sq ft / 54.2 sq m

Balcony = 67 sq ft / 6.2 sq m

GARTON JONES  
LONDON



This plan is not to scale and must be used as layout guidance only. All measurements and areas are approximate and should not be relied upon to provide accurate information. This plan must not be relied upon when making property valuations, design considerations or any other such relevant decisions. We accept no responsibility or liability (whether in contract, tort or otherwise) in relation to any loss whatsoever arising from or in connection with any use of this plan or the adequacy, accuracy or completeness of it or any information within it.





